



# REVERVY

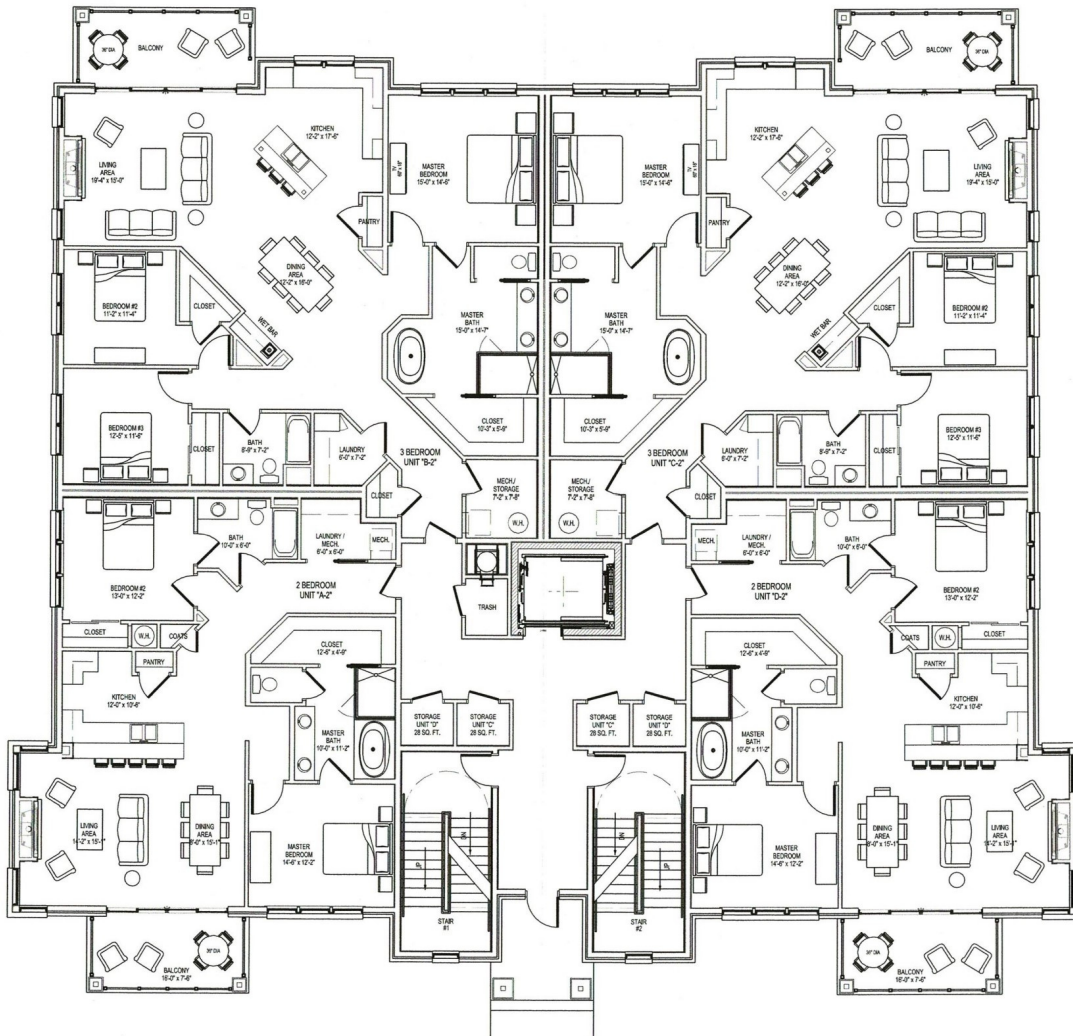
## WATERSIDE



RESERVATIONS NOW AVAILABLE

COMING SOON - FALL 2023/WINTER 2024

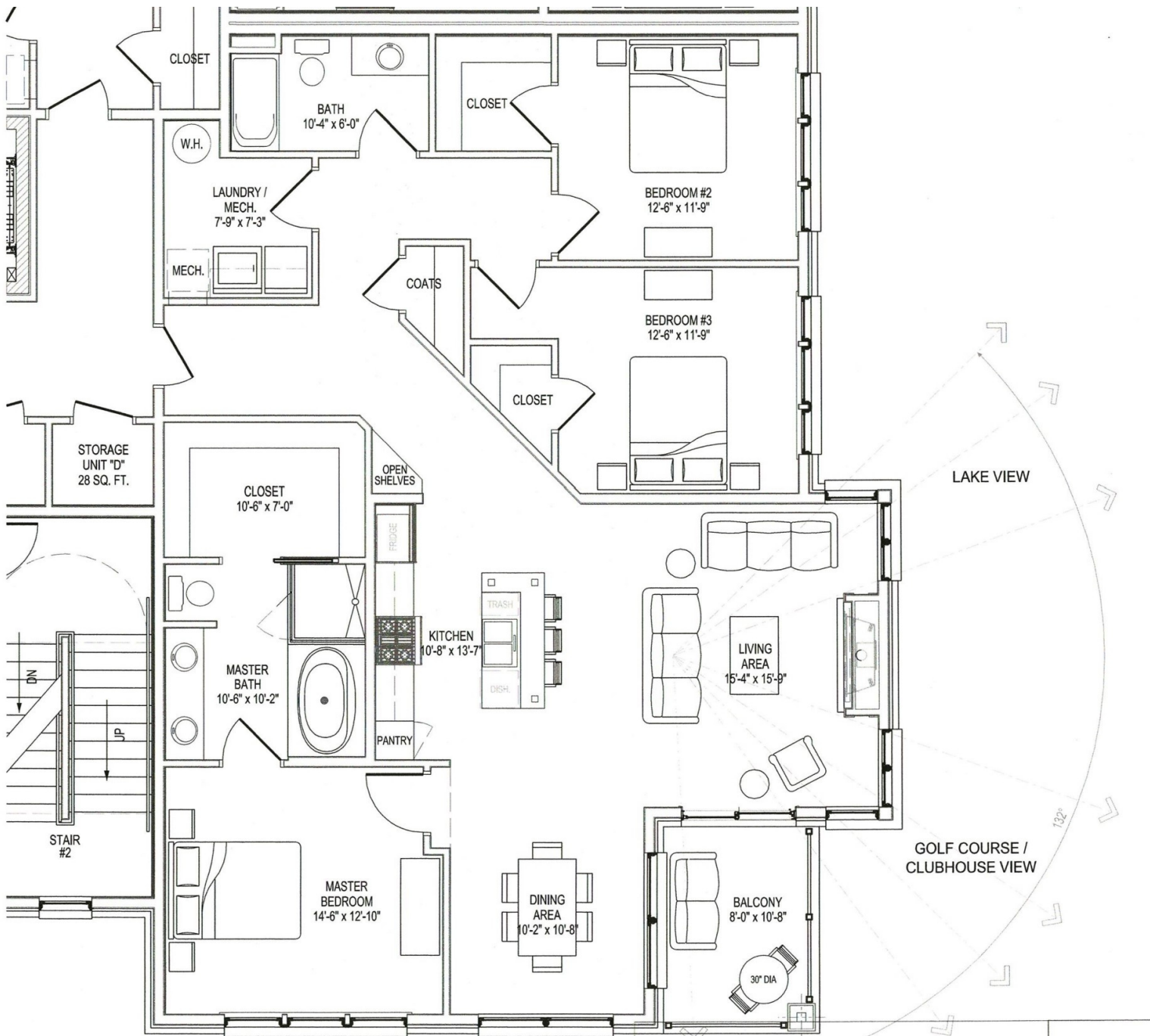
*Our new project, Revery Waterside, is now available for reservations! At this time we are accepting refundable reservation deposits of \$5,000. This Reservation Deposit will put you in line on a list to select your condo unit when it comes time to start construction!*



*Floor Layout*

- *4 Units Per Floor*
- *16 Units Total in Building*
- *Parking Garage Below*
- *Elevator Runs From Parking Garage to 4th Floor*

DISCLAIMER: This is an architectural rendering only and subject to change without notice. The rendering may show features that are not included or may change at any time. All sizes, features, dimensions or any other items shown are not exact and may not represent the actual completed unit. The developer reserves the right to change or modify any part of the floor plan, site plan, building elevations or any item representative of the Revery Waterside project at any time and without notice.



*DISCLAIMER: This is an architectural rendering only and subject to change without notice. The rendering may show features that are not included or may change at any time. All sizes, features, dimensions or any other items shown are not exact and may not represent the actual completed unit. The developer reserves the right to change or modify any part of the floor plan, site plan, building elevations or any item representative of the Revery Waterside project at any time and without notice.*

### Golf Course Facing Unit

- 1,750 sq.ft. Living Area
- 1,874 sq.ft. Total Area (with Balcony and Storage Unit)
- 3 Bedrooms 2 Baths
- 5x5 Storage Unit
- 1 Covered Parking Space
- 1 Uncovered Parking Space

If you would like to reserve your unit please contact Bailey Poindexter at:  
 615-451-0909 | [Bailey@TheGodfreyGroup.com](mailto:Bailey@TheGodfreyGroup.com)



# REVERVY

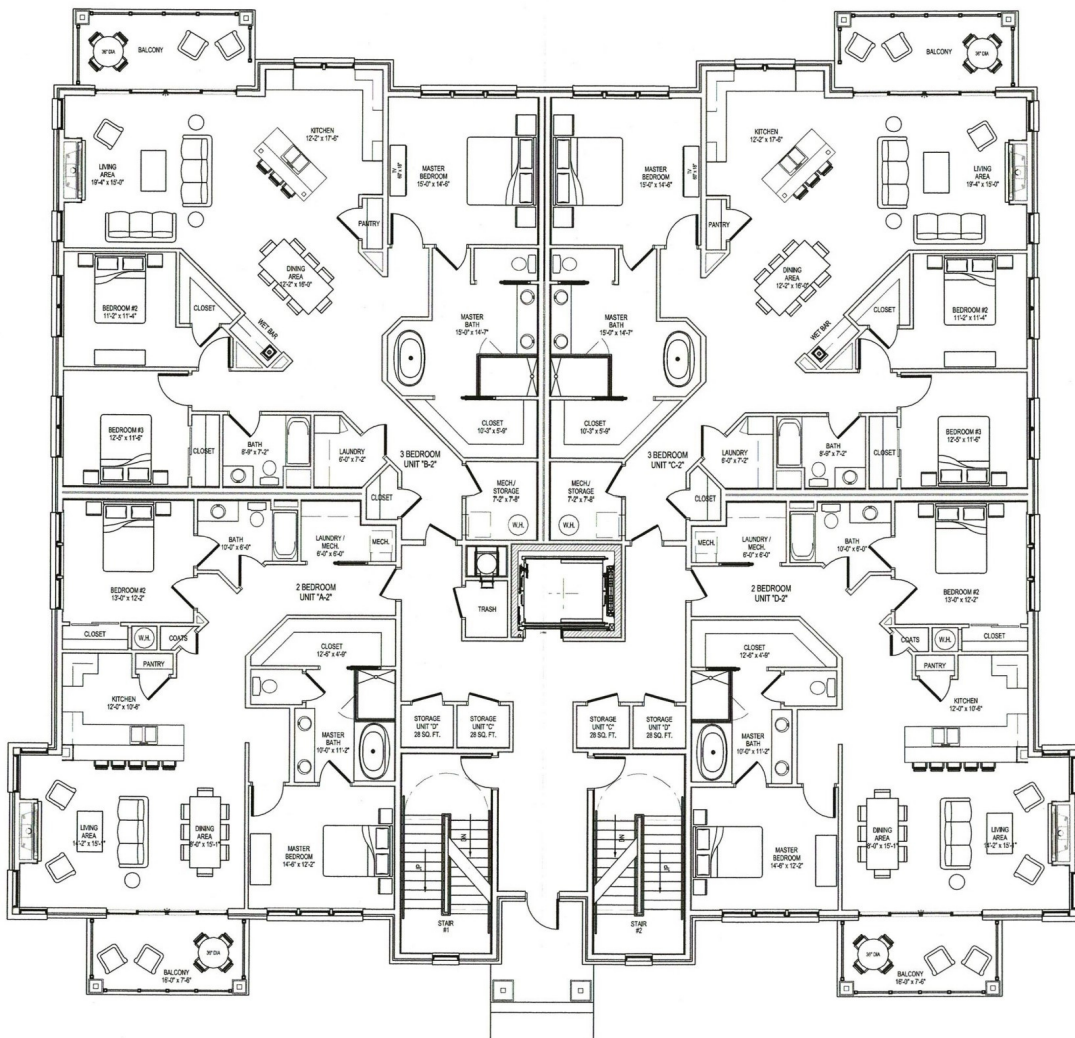
WATERSIDE



RESERVATIONS NOW AVAILABLE

COMING SOON - FALL 2023/WINTER 2024

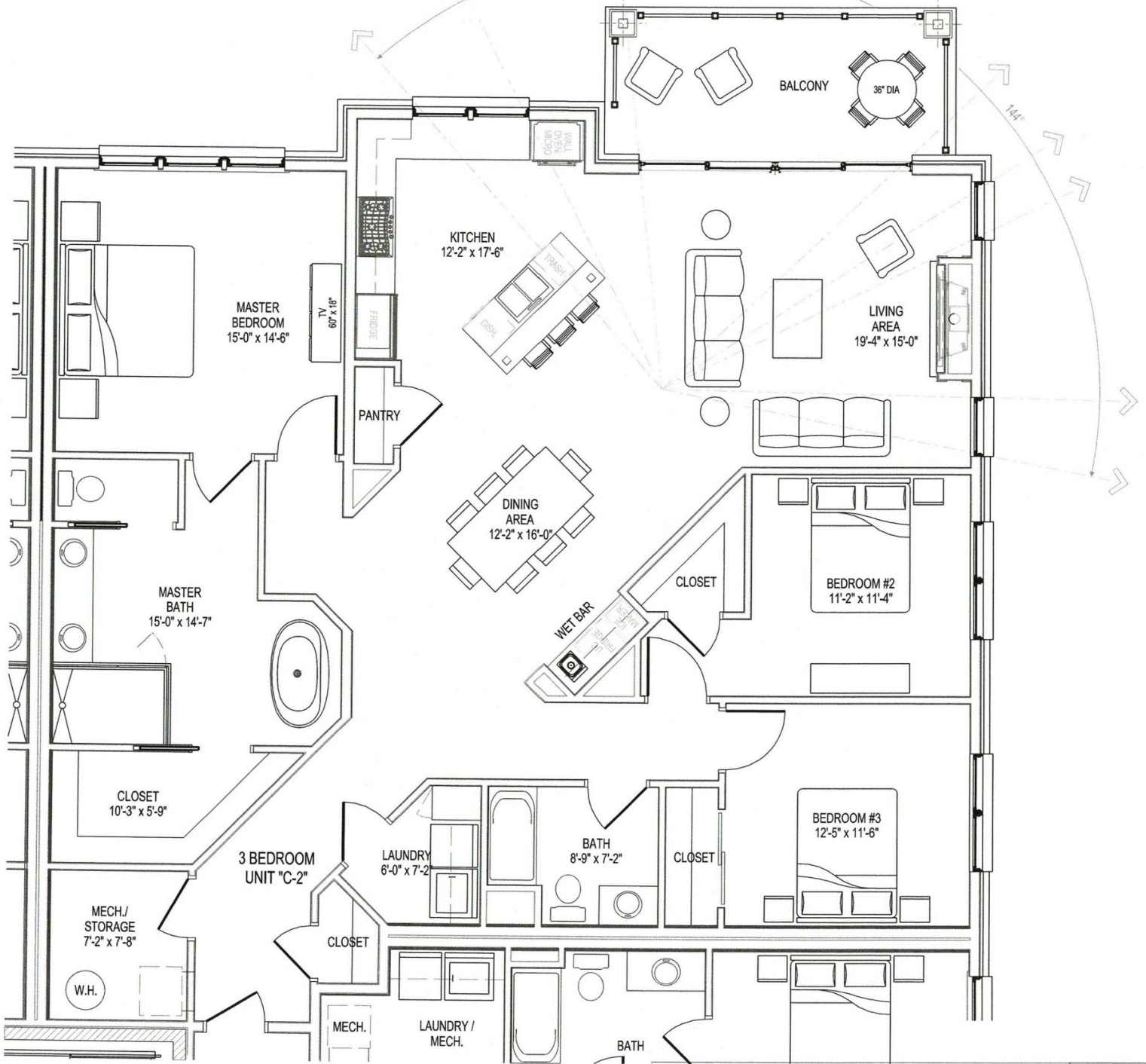
Our new project, *Revery Waterside*, is now available for reservations! At this time we are accepting refundable reservation deposits of \$5,000. This Reservation Deposit will put you in line on a list to select your condo unit when it comes time to start construction!



*Floor Layout*

- 4 Units Per Floor
- 16 Units Total in Building
- Parking Garage Below
- Elevator Runs From Parking Garage to 4th Floor

**DISCLAIMER:** This is an architectural rendering only and subject to change without notice. The rendering may show features that are not included or may change at any time. All sizes, features, dimensions or any other items shown are not exact and may not represent the actual completed unit. The developer reserves the right to change or modify any part of the floor plan, site plan, building elevations or any item representative of the Revery Waterside project at any time and without notice.



*DISCLAIMER: This is an architectural rendering only and subject to change without notice. The rendering may show features that are not included or may change at any time. All sizes, features, dimensions or any other items shown are not exact and may not represent the actual completed unit. The developer reserves the right to change or modify any part of the floor plan, site plan, building elevations or any item representative of the Revery Waterside project at any time and without notice.*

### Lakefront Units

- 2,045 sq.ft. Living Area
- 2,200 sq.ft. Total Area (with Balcony and Storage Unit)
- 3 Bedrooms 2 Baths
- 5x5 Storage Unit
- 1 Covered Parking Space
- 1 Uncovered Parking Space

---

If you would like to reserve your unit please contact Bailey Poindexter at:  
 615-451-0909 | [Bailey@TheGodfreyGroup.com](mailto:Bailey@TheGodfreyGroup.com)