



REVERY
POINT
Luxury Lakefront Residences

THE WAYPOINT

1,536 Sq. Ft. Total Area

DISCLAIMER: This is an architectural rendering only and subject to change without notice. The rendering may show features that are not included or may change at any time. All sizes, features, dimensions or any other items shown are not exact and may not represent the actual completed unit. The developer reserves the right to change or modify any part of the floor plan, site plan, building elevations or any item representative of the Revery Point project at any time and without notice.



THE WAYPOINT

2 Bedrooms, 2 Baths

1,373 Sq. Ft. Living Area • 138 Sq. Ft. Balcony Area

25 Sq. Ft. Storage Area • 1,536 Sq. Ft. Total Area

AMENITIES:

Expansive Waterfront Views
 1 Reserved Parking Garage Space
 1 Reserved Surface Parking Space
 Elevator Access
 Hardwood Floors
 Luxury Waterfront Master Suite
 Ventless Gas Fireplace
 Stainless Steel Appliances
 Granite Countertops
 Ceramic Tile Baths
 Double Sink Master Vanity
 Large Walk In Master Closet
 Elevator Lobby with Sitting Area
 Access to Club Amenities

OPTIONAL LUXURIES:

Master Bath Soaking Tub/Shower
 Hardwood Floors in Bedrooms
 Custom Designed Closet Shelving
 Upgraded Package Options
 Additional Parking Garage Space
 Golf Memberships Available



Optional Master Bath
 Soaking Tub/Shower



REVERY POINT

Luxury Lakefront Residences

WWW.LIVEREVERY.COM

1024 Club View Drive, Gallatin, TN 37066

For more information:

Godfrey Realty Group, LLC • 615.451.0909

Email - bailey@liverevery.com

DISCLAIMER: Unit storage sizes vary slightly per unit.



REVERY POINT

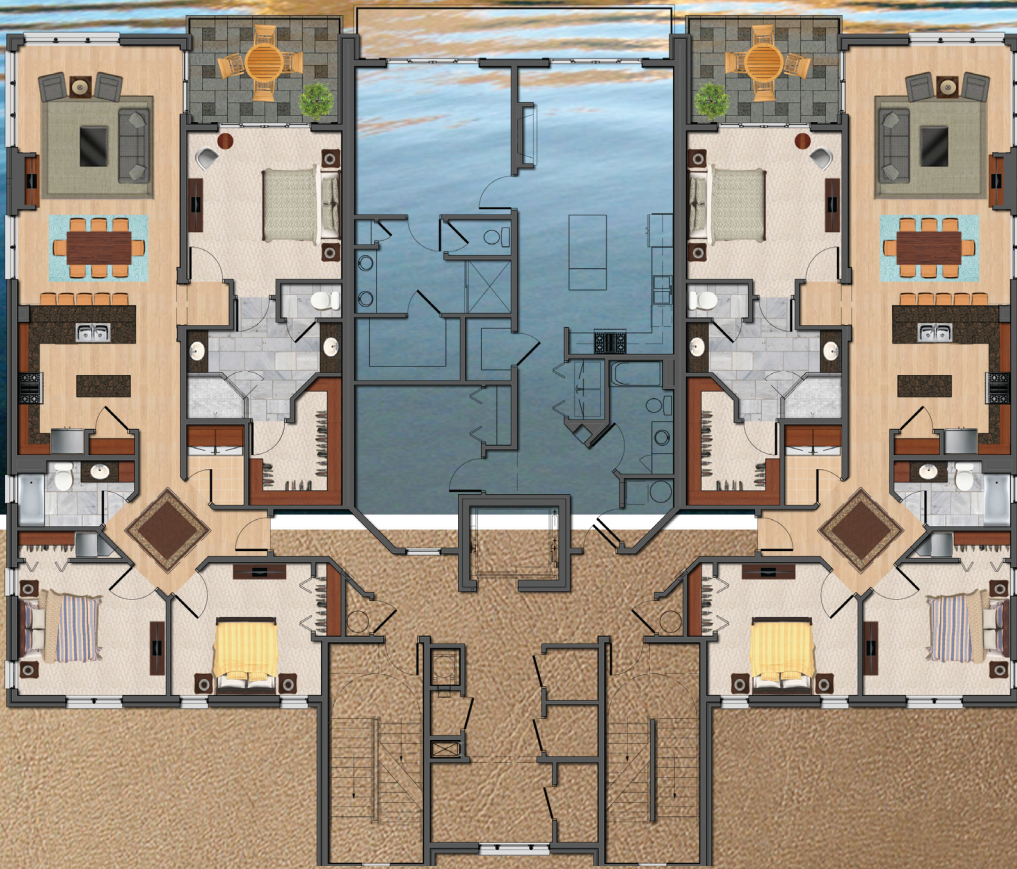
Luxury Lakefront Residences



2,020 Sq. Ft. Total Area

THE HORIZON

DISCLAIMER: This is an architectural rendering only and subject to change without notice. The rendering may show features that are not included or may change at any time. All sizes, features, dimensions or any other items shown are not exact and may not represent the actual completed unit. The developer reserves the right to change or modify any part of the floor plan, site plan, building elevations or any item representative of the Revery Point project at any time and without notice.



THE HORIZON

3 Bedrooms, 2 Baths

1,862 Sq. Ft. Living Area • 133 Sq. Ft. Balcony Area

25 Sq. Ft. Storage Area • 2,020 Sq. Ft. Total Area

AMENITIES:

Expansive Waterfront Views
1 Reserved Parking Garage Space
1 Reserved Surface Parking Space
Elevator Access
Hardwood Floors
Luxury Waterfront Master Suite
Ventless Gas Fireplace
Stainless Steel Appliances
Granite Countertops
Ceramic Tile Baths
Split Master Vanities
Large Walk In Master Closet
Elevator Lobby with Sitting Area
Access to Club Amenities

OPTIONAL LUXURIES:

Master Bath Soaking Tub
Hardwood Floors in Bedrooms
Custom Designed Closet Shelving
Upgraded Package Options
Additional Parking Garage Space
Golf Memberships Available



Optional Master Bath
Soaking Tub



REVERY
POINT

Luxury Lakefront Residences

WWW.LIVEREVERY.COM

1024 Club View Drive, Gallatin, TN 37066

For more information:
Godfrey Realty Group, LLC • 615.451.0909
Email - bailey@liverevery.com

DISCLAIMER: Unit storage sizes vary slightly per unit.



REVERY
POINT
Luxury Lakefront Residences



2,864 Sq. Ft. Total Area

THE BREAKWATER

DISCLAIMER: This is an architectural rendering only and subject to change without notice. The rendering may show features that are not included or may change at any time. All sizes, features, dimensions or any other items shown are not exact and may not represent the actual completed unit. The developer reserves the right to change or modify any part of the floor plan, site plan, building elevations or any item representative of the Revery Point project at any time and without notice.



THE BREAKWATER

3 Bedrooms, 2 Baths
 2,646 Sq. Ft. Living Area • 177 Sq. Ft. Balcony Area
 41 Sq. Ft. Storage Area • 2,864 Sq. Ft. Total Area

AMENITIES:

Expansive Waterfront Views
 2 Reserved Parking Garage Spaces
 Elevator Access
 Hardwood Floors
 Luxury Waterfront Master Suite
 Ventless Gas Fireplace
 Stainless Steel Appliances
 Granite Countertops
 Ceramic Tile Baths
 Split Master Vanities
 Large Walk In Closets
 Additional Storage Closet
 Elevator Lobby with Sitting Area
 Access to Club Amenities

OPTIONAL LUXURIES:

Additional Half Bath
 Master Bath Soaking Tub
 Hardwood Floors in Bedrooms
 Custom Designed Closet Shelving
 Upgraded Package Options
 Golf Memberships Available



Optional Dining Areas



Optional Master Bath
 Soaking Tub


REVERY
 POINT

Luxury Lakefront Residences

WWW.LIVEREVERY.COM
 1024 Club View Drive, Gallatin, TN 37066

For more information:
 Godfrey Realty Group, LLC • 615.451.0909
 Email - bailey@liverevery.com